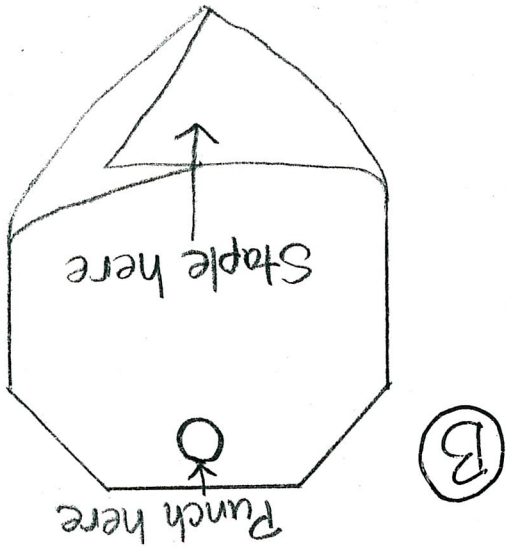
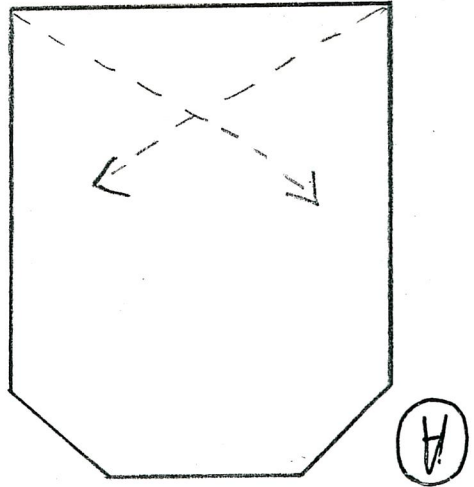


*Christmas Card Tree*

BASE: 4" square of wood 1/2" thick  
 1 - 15 1/2" dowel 1/4" diameter  
 DRILL 1/4" hole in center of wood base.  
 INSERT glue into hole and place dowel.  
 CUT cards as numbered on templates 1-2-3-4-5-6-7-8-9-10 and star. The star should be made with gold or silver.  
 Total 75 pieces with the stars.  
 BEGIN with #1 pieces. ROLL wide end of piece to a point and staple the lap together underneath (see illustration A).



PUNCH a hole in the other end of the card (see illustration B).

SLIDE rolled piece down to the bottom of the dowel.

REPEAT with all 2-3-4-5-6-7-8-9-10 pieces, arrange in a circle to form a tree.  
 GLUE the 2 layers of the star together, leaving an open space to slip over the  
 dowel.

**Dearborn County**  
**Solid Waste Management District**  
 10700 Prospect Lane • Aurora IN 47001  
 Phone: (812) 926-9963 • (800) 537-8801  
 Fax: (812) 926-9668  
 Email: [dcswm@dcarborncounty.in.gov](mailto:dcswm@dcarborncounty.in.gov)

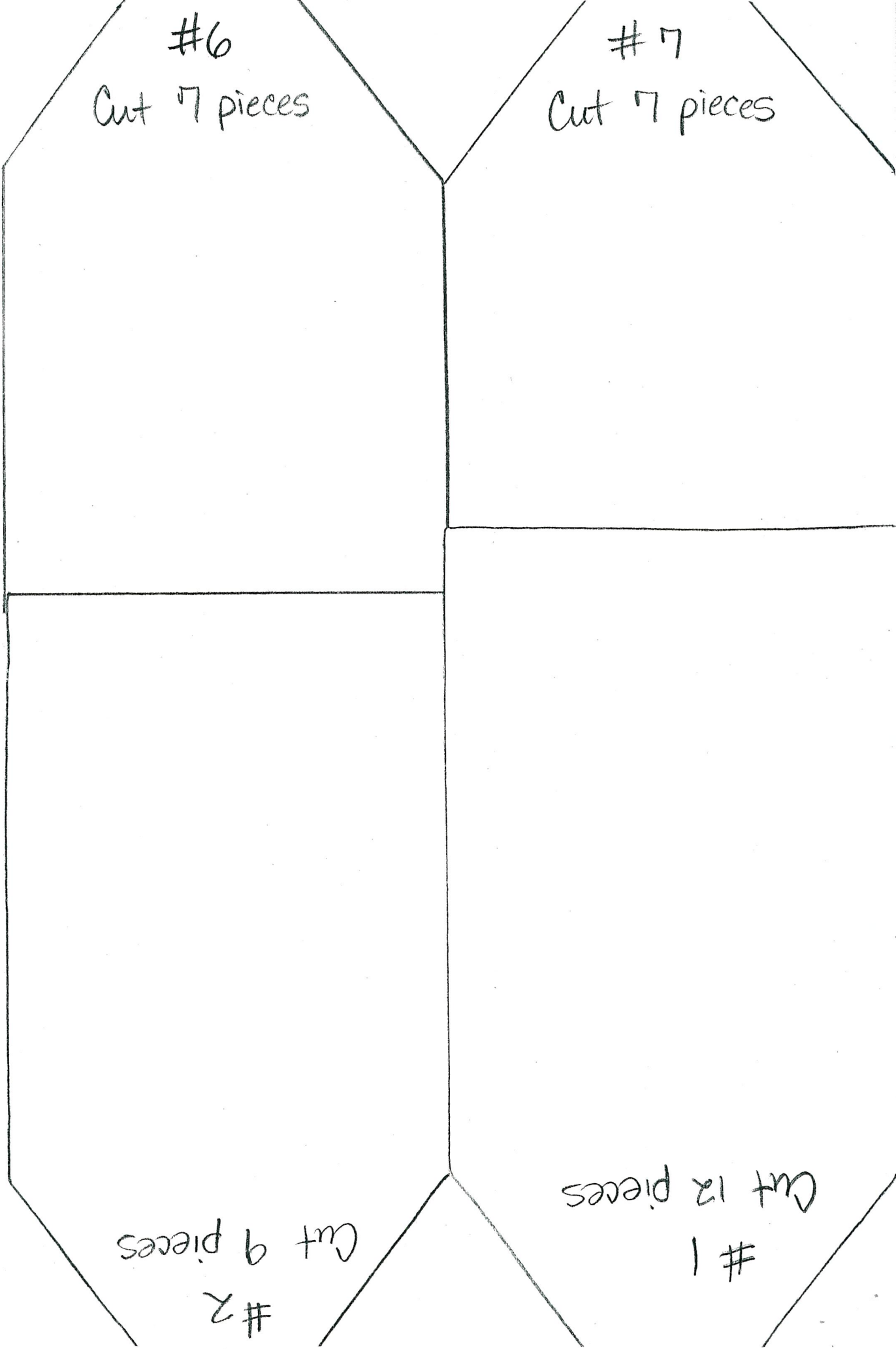


#6

Cut 7 pieces

#7

Cut 7 pieces



Cut 9 pieces

#2

Cut 12 pieces

#1

#3  
Cut 7 pieces

#4  
Cut 7 pieces

#8  
Cut 6 pieces

#5  
Cut 7 pieces

